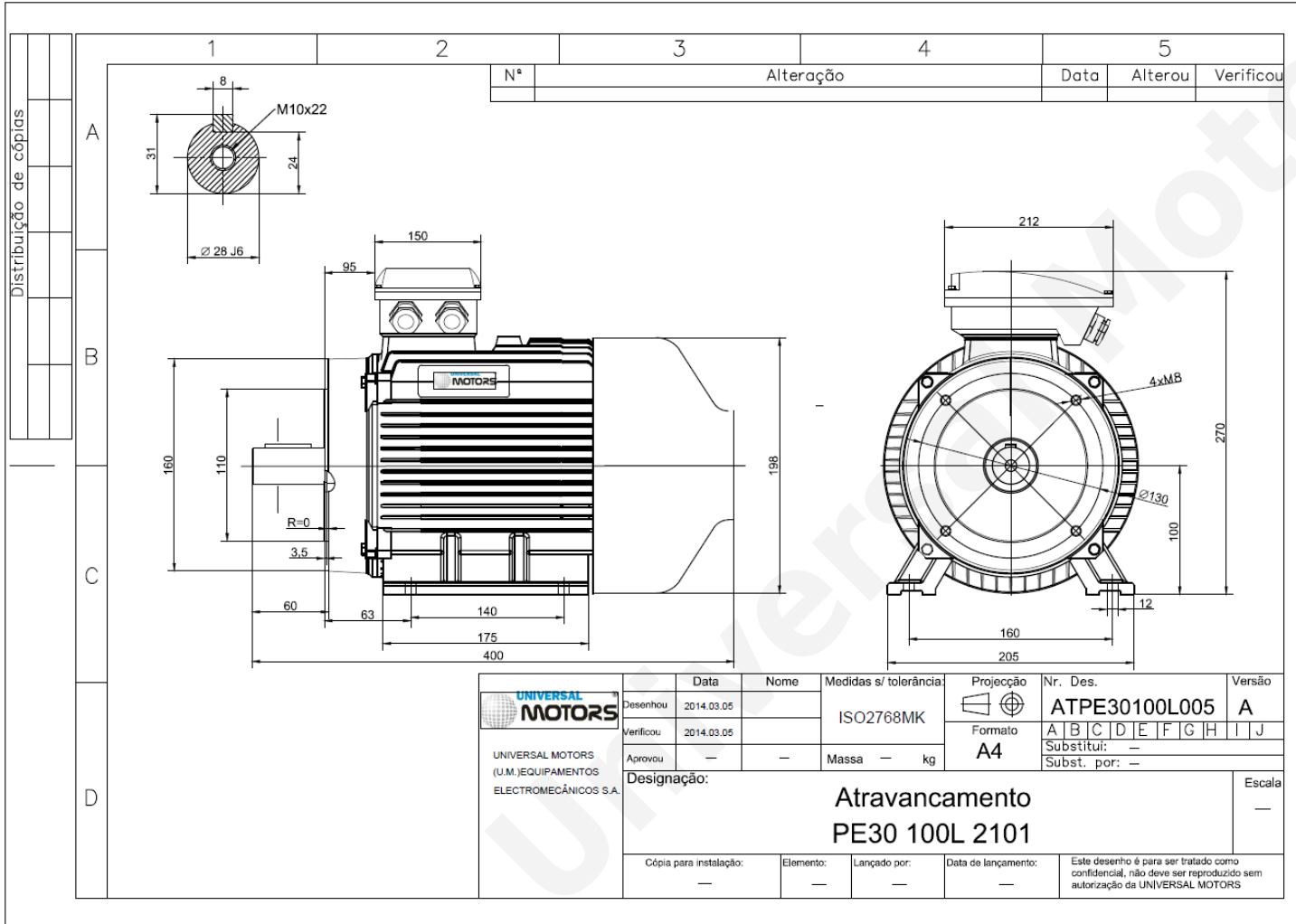


TECHNICAL DATA

Three Phase Electric Motors - Cast Iron Frame
 PE30 100L1-8
 0.75 kW / 1 Cv
 680 RPM



Motor type:	PE30 100L1-8
Output:	0.75 kW / 1 Cv
Speed (min ⁻¹):	680 RPM
Frequency:	50 Hz
Voltage:	400 V
Current:	2.20 A
Power factor (Cos Ø):	0.67
Poles:	8
Insulation class:	F
Temperature rise Class:	B
Efficiency 50%:	71.5 %
Efficiency 75%:	75.3 %
Efficiency 100%:	75.0 %
Torque:	10 N.m
Tstarting/Tnominal:	1.8
Istarting/Inominal:	4.0
Tmaximum/Tnominal:	2.0
Noise:	59 Db(A)
Weight:	33.5 Kg
Bearing DE:	6206 2Z C3
Bearing NDE:	6206 2Z C3

Regime - S1

Altitude - 1000m

Environment Temperature - 40°C

CONTACTS:

UNIVERSAL MOTORS Tel: +351 252 299 080
 Rua de São Brás,745 Fax: +351 252 299 089
 4480-782 VILA DO CONDE Mail: geral@universalmotors.pt

* References applied only in the UK